

Intelligent Terminals Supervisor series

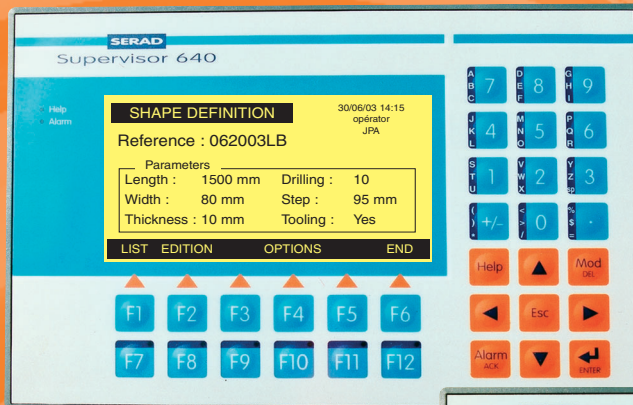
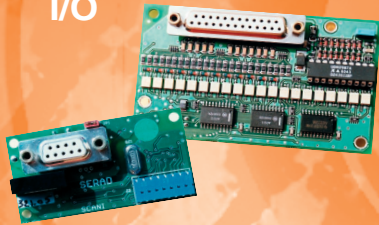
Operation

Connected

PLC
CNC
DRIVE
Remote I/O

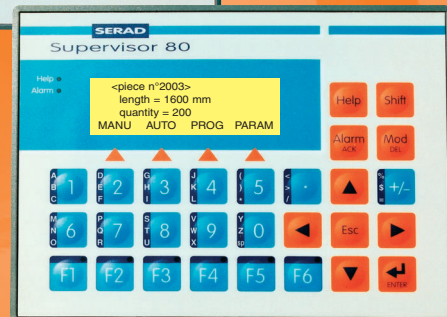
Communication

RS 232
RS 422, RS 485
CANopen
I/O



Features

- Real time core
- Integrated PLC
- Computing power
- Program recipe



User Friendly

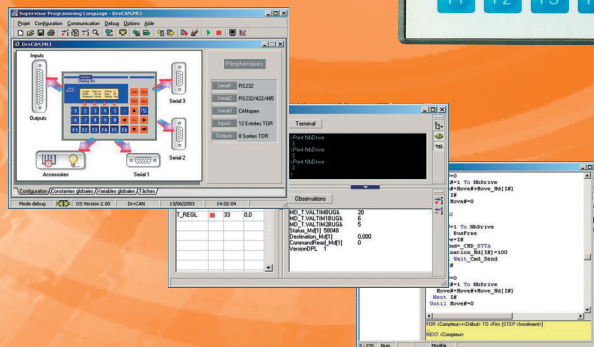
Basic language

Set-up tools

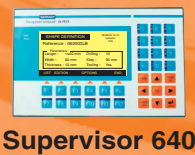
Hyper terminal
CAN analyser
Oscilloscope

Multiple-windows

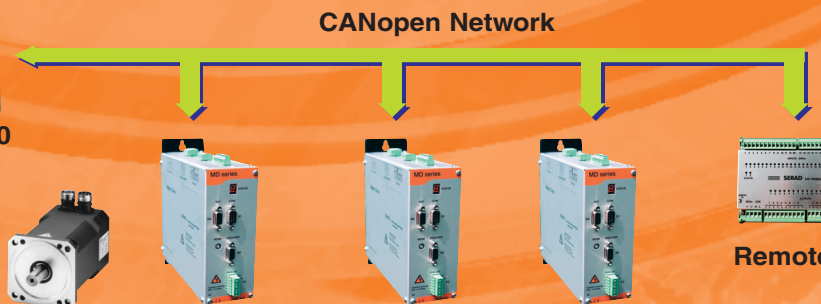
On-line help



Application



Supervisor 640



Drives

Remote I/O

Supervisor 80

Supervisor 640

Display

| | | |
|------------------------|-------------------|--------------------------------------------|
| Monochrome LCD display | LED backlight | CFL backlight |
| Display area | 74 x 23 mm | 122 x 66 mm resolution 240 x 128 pixels |
| Character sizes | 1 | 8 |
| Lines x characters | 4 x 20 | 16 x 40, 9 x 30, 8 x 26, 6 x 17 |
| Character attributes | Normal - blinking | Normal - reverse - blinking |

Keyboard

| | | |
|---------------------------------|-----|-----|
| Keys with tactile feedback | 28 | 33 |
| Dynamic functions keys | 6 | 12 |
| Re-legendable function keys | 6 | 6 |
| Numeric and alphanumeric keypad | Yes | Yes |
| Status LEDs | 8 | 8 |
| Buzzer | Yes | Yes |

Performance

| | | |
|------------------------------|-------------------------------------------------------------|--------------------------------------------------------------------|
| Real time core, multitasking | 32 bit processor 28 tasks, 3 priority levels | 32 bit processor 28 tasks, 3 priority levels |
| Flash memory | 8 Mbits | 8 Mbits |
| Non-volatile RAM memory | 4 Mbits 50 000 variables | 4 Mbits 50 000 variables |
| Real time clock | Yes | Yes |
| Communication | COM1 : RS 232 COM2* : RS 232, RS 422, RS 485, CANopen | COM1 : RS 232 COM2* : RS 232, RS 422, RS 485 COM3* : CANopen |
| Digital Inputs / Outputs* | 12 inputs / 8 outputs | 12 inputs / 8 outputs |
| Watchdog | Yes | Yes |

Software

| | | |
|----------------------|--------------------------------------------------------------------------------------|--------------------------------------------------------------------------------------|
| Programming language | Basic | Basic |
| Set-up tools | Hyper-terminal CANopen analyser Single step mode – breakpoints Oscilloscope | Hyper-terminal CANopen analyser Single step mode – breakpoints Oscilloscope |
| Integrated help | On-line help Complete help | On-line help Complete help |

* options

Specifications

| | Supervisor 80 | Supervisor 640 |
|-----------------------------|----------------|----------------|
| Supply voltage | 24 Vdc | 24 Vdc |
| Power requirements | 8 W | 12 W |
| Operating temperature | 0 to 45°C | 0 to 45°C |
| Storage temperature | -20 to 70°C | -20 to 70°C |
| Front panel protection | IP65 | IP65 |
| Dimensions W x H x D (mm) | 178 x 138 x 53 | 245 x 168 x 53 |